

River Parkway

The Past



**Friends of the Santa
Clara River**

<http://www.fscr.org>

(805)498-4323

or E-mail:

bottorffm@verizon.net

Vision of the Future

**Jim Danza, MS AICP
Assistant Professor
Oxnard College**

Geography Program

Opinions and points of view are not
necessarily those of Oxnard College.

What is a Parkway?



Why a Santa Clara River Parkway?



- **Natural Flood Control**
- **Water Supply**
- **Habitat Preservation**
- **Education/Recreation**
- **Climate Change Resilience**

CALIFORNIA WORLD PRESS

no.203.078

You read it here first, unfortunately.

- Since 1850

River FLOODS!



Santa Paula Airport 2005

Ea pro natum invidunt repudiandae, his et facilisis vituperatoribus. Mei eu ubique altera senserit, consul eripuit accusata has ne. Ignota verterem te nam, eu cibo causae menandri vim. Sit rebum erant dolorem et, sed odio error ad. Vel molestie corrumpit deterruisset ad, mollis ceteros ad sea.

.et sed. Lorem volumus blandit cu has. Sit cu alia porro fuisset.

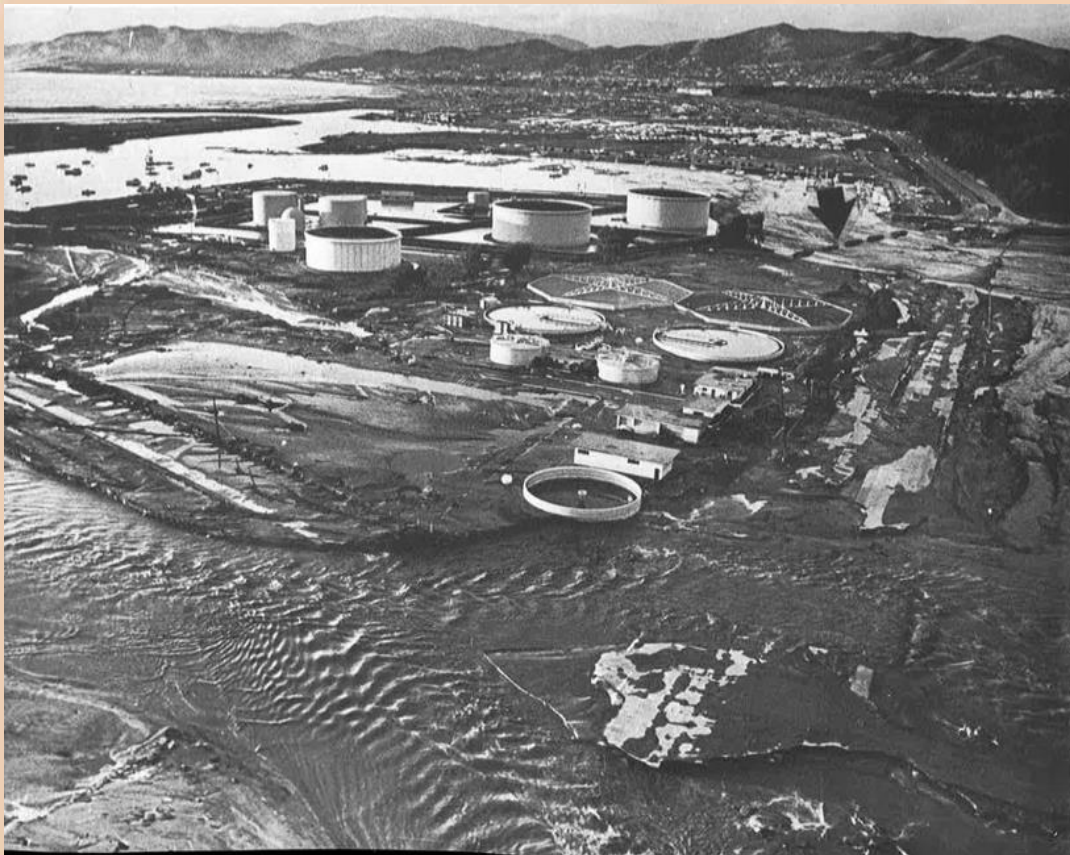
CALIFORNIA WORLD PRESS

no.203.078

You read it here first, unfortunately.

- Since 1850

River FLOODS!



Ventura Harbor 1969

Ea pro natum invidunt repudiandae, his et facilisis vituperatoribus. Mei eu ubique altera senserit, consul eripuit accusata has ne. Ignota verterem te nam, eu cibo causae menandri vim. Sit rebum erant dolorem et, sed odio error ad. Vel molestie corrumpit deterruisset ad, mollis ceteros ad sea.

.et sed. Lorem volumus blandit cu has. Sit cu alia porro fuisset.

CALIFORNIA WORLD PRESS

no.203.078

You read it here first, unfortunately.

- Since 1850

River FLOODS!



Santa Clara River 1938

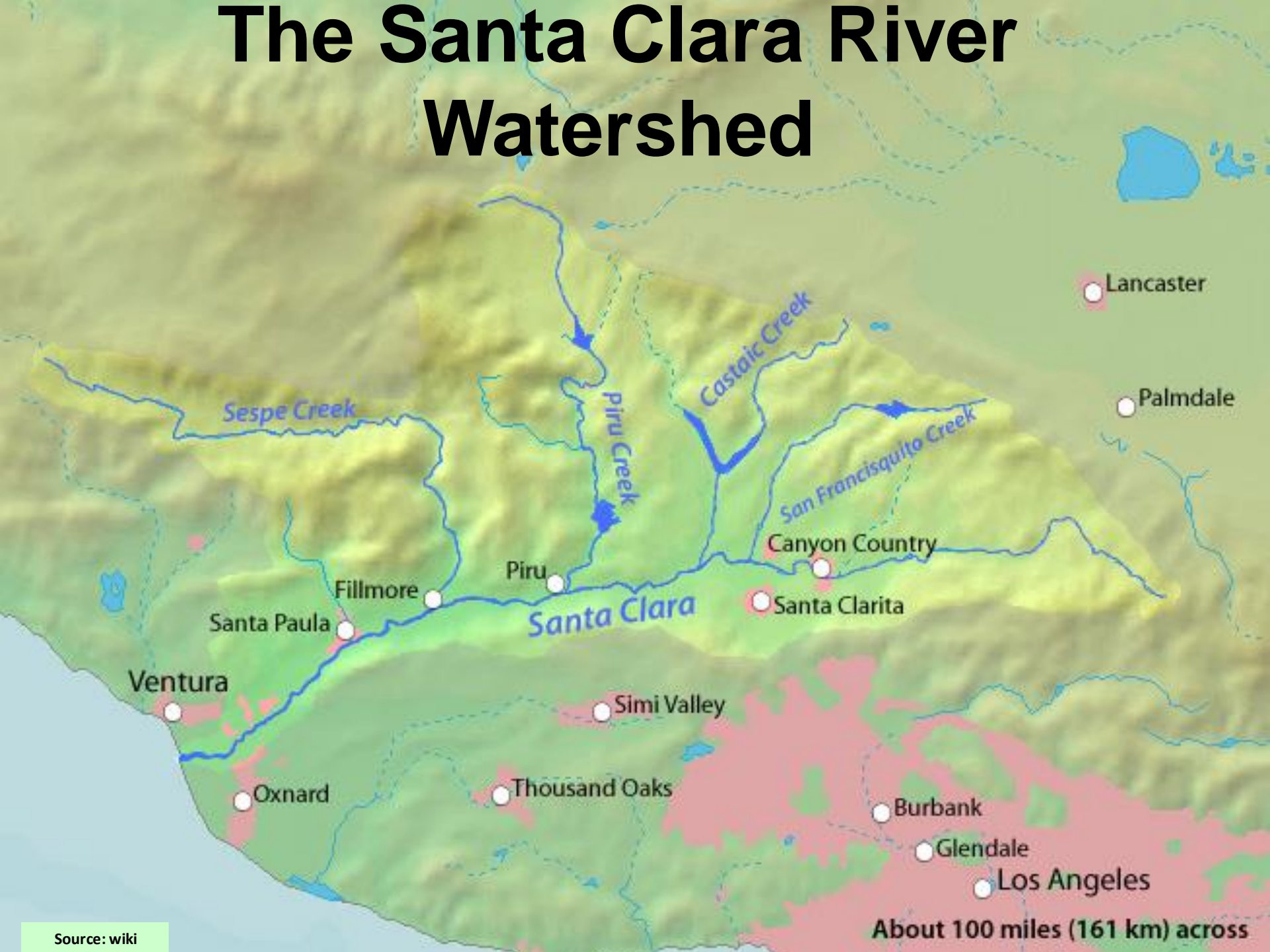
Ea pro natum invidunt repudiandae, his et facilis vituperatoribus. Mei eu ubique altera senserit, consul eripuit accusata has ne. Ignota verterem te nam, eu cibo causae menandri vim. Sit rebum erant dolorem et, sed odio error ad. Vel molestie corrumpit deterruisset ad, mollis ceteros ad sea.

.et sed. Lorem volumus blandit cu has. Sit cu alia porro fuisset.

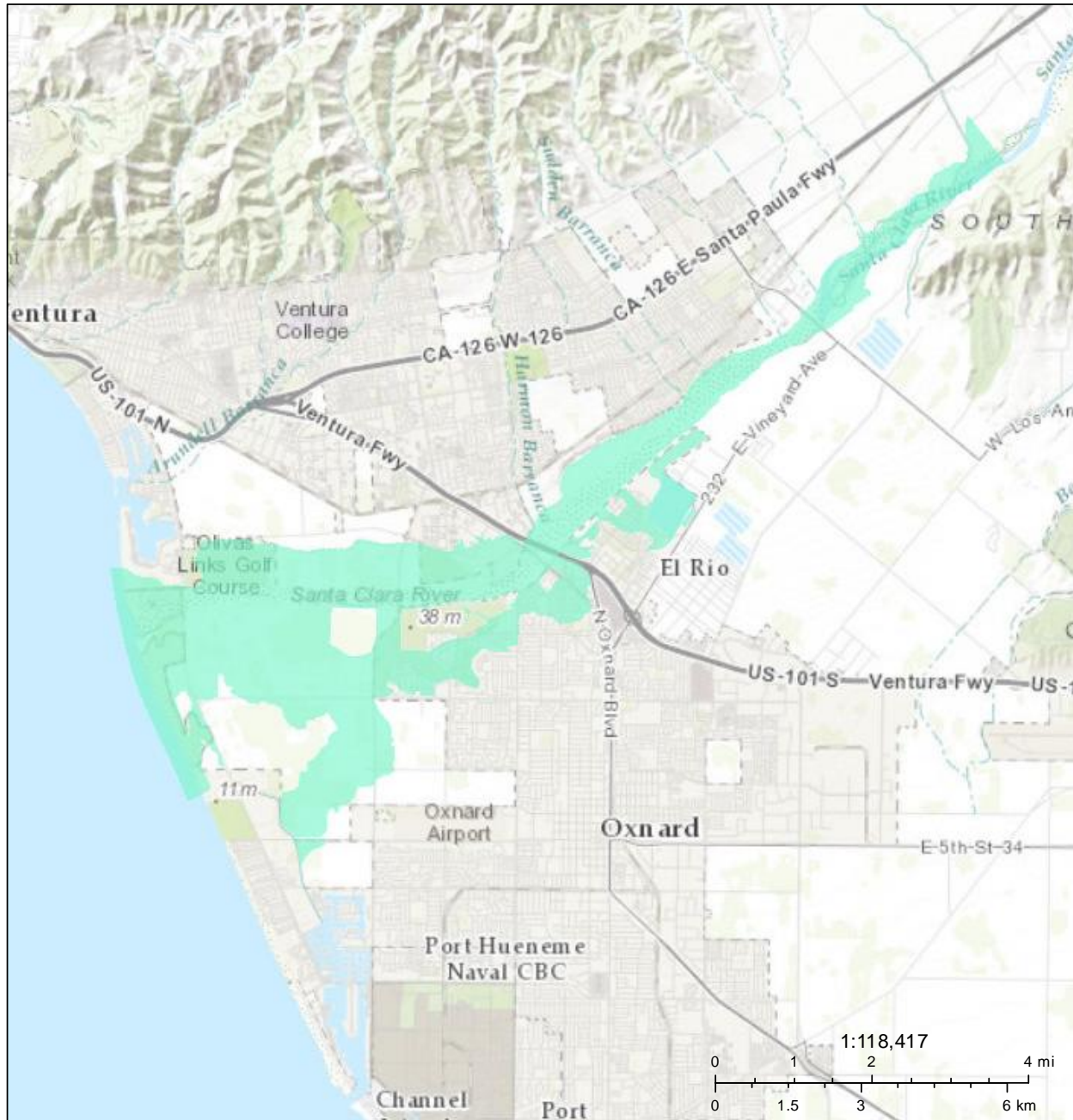
Ea pro natum invidunt repudiandae, his et facilis vituperatoribus. Mei eu ubique altera senserit, consul eripuit accusata has ne. Ignota verterem te nam, eu cibo causae menandri vim. Sit rebum erant dolorem et, sed odio error ad. Vel molestie corrumpit deterruisset ad, mollis ceteros ad sea.

.et sed. Lorem volumus blandit cu has. Sit cu alia porro fuisset.

The Santa Clara River Watershed

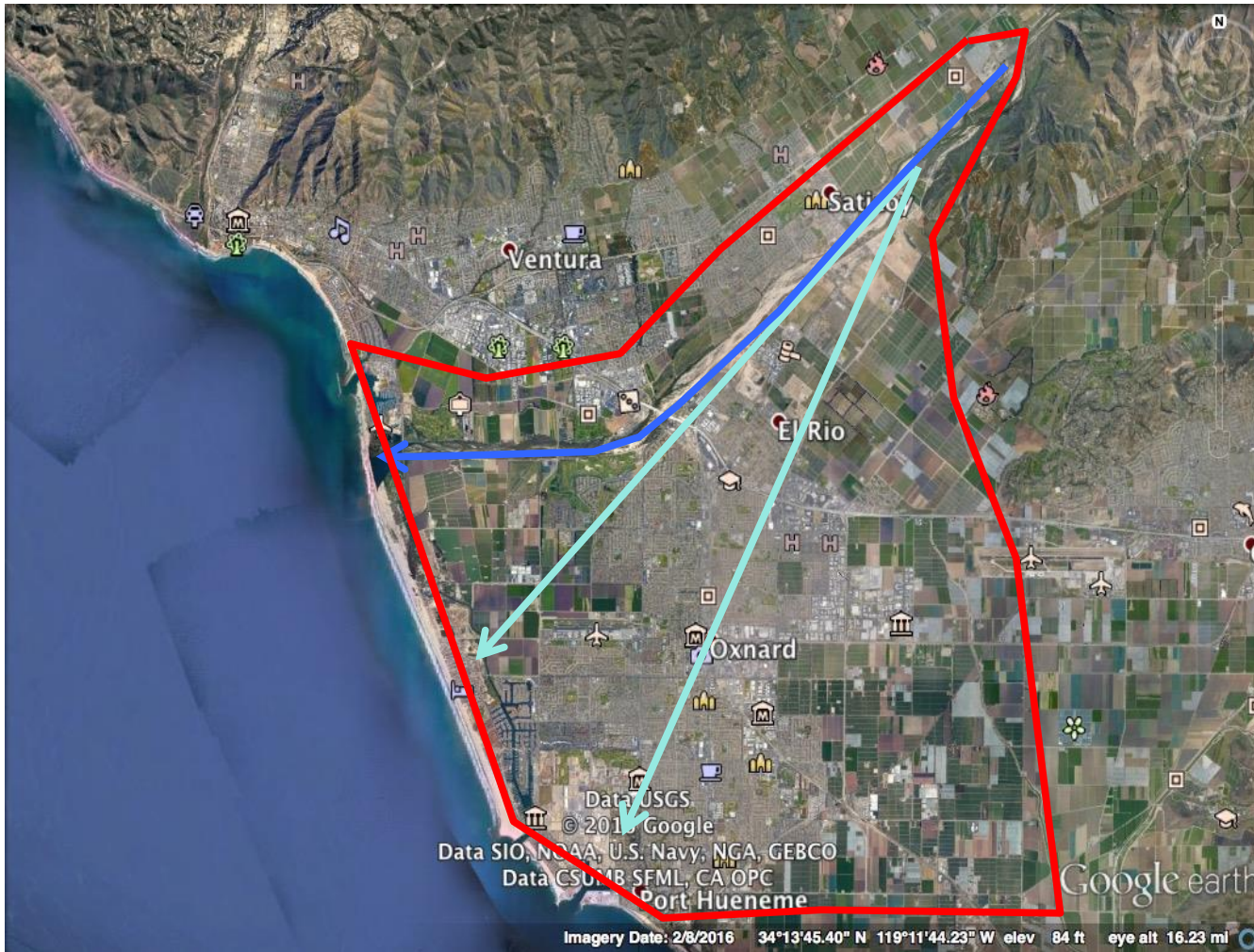


Santa Clara River Flooding

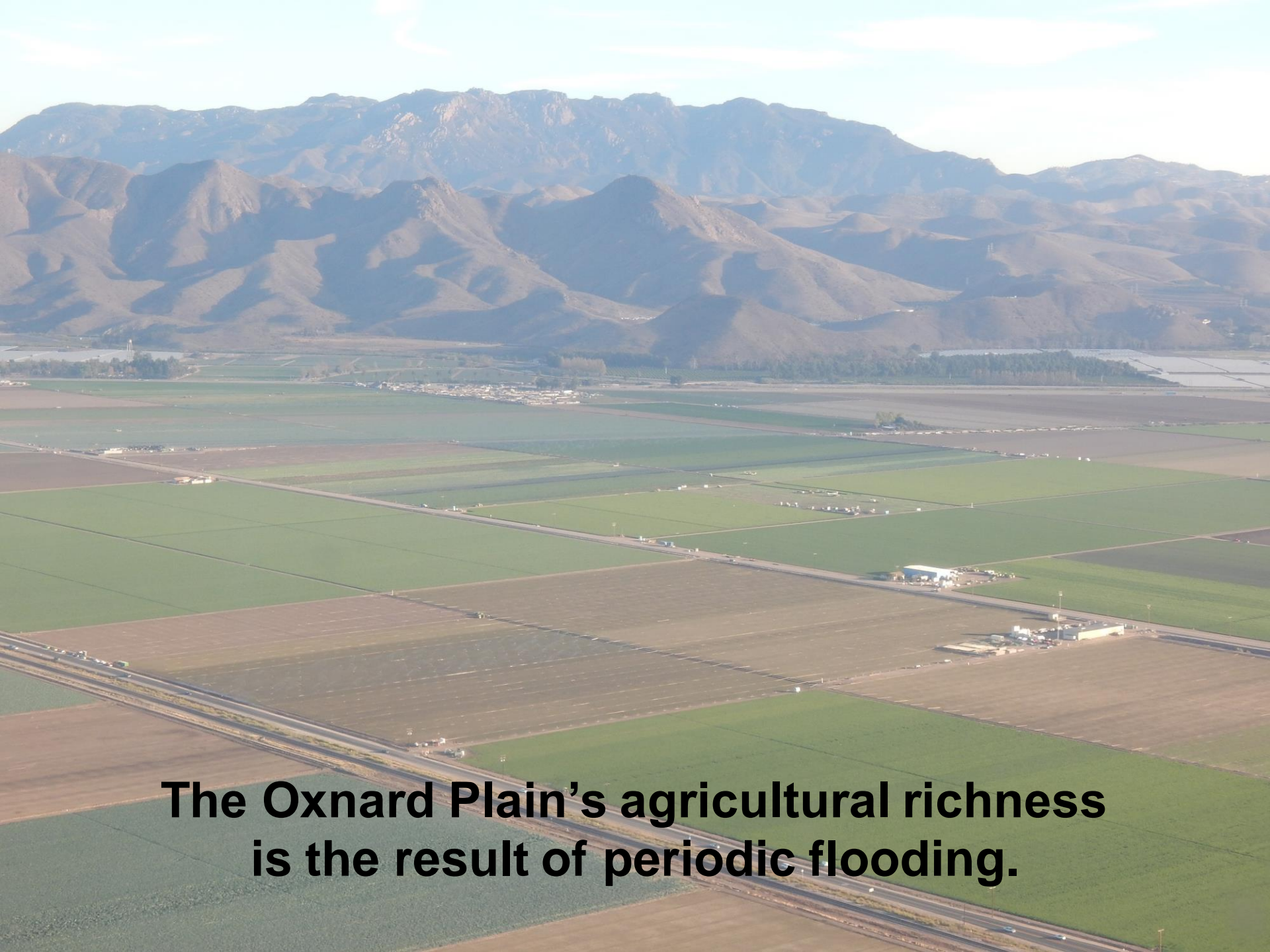


River Flood Inundation (large storm)___Curr...

Floodplains



High load of sand and gravel causes the River to change course during floods.



The Oxnard Plain's agricultural richness is the result of periodic flooding.

Avoid Engineering Controls

**Parkways
prevent
levees/walls.**

**A short
segment of
similar wall
was proposed
last year.**



**I got rid of
the flood water!**

Wait, I'm thirsty.



Water Supply

Natural rivers recharge
groundwater.



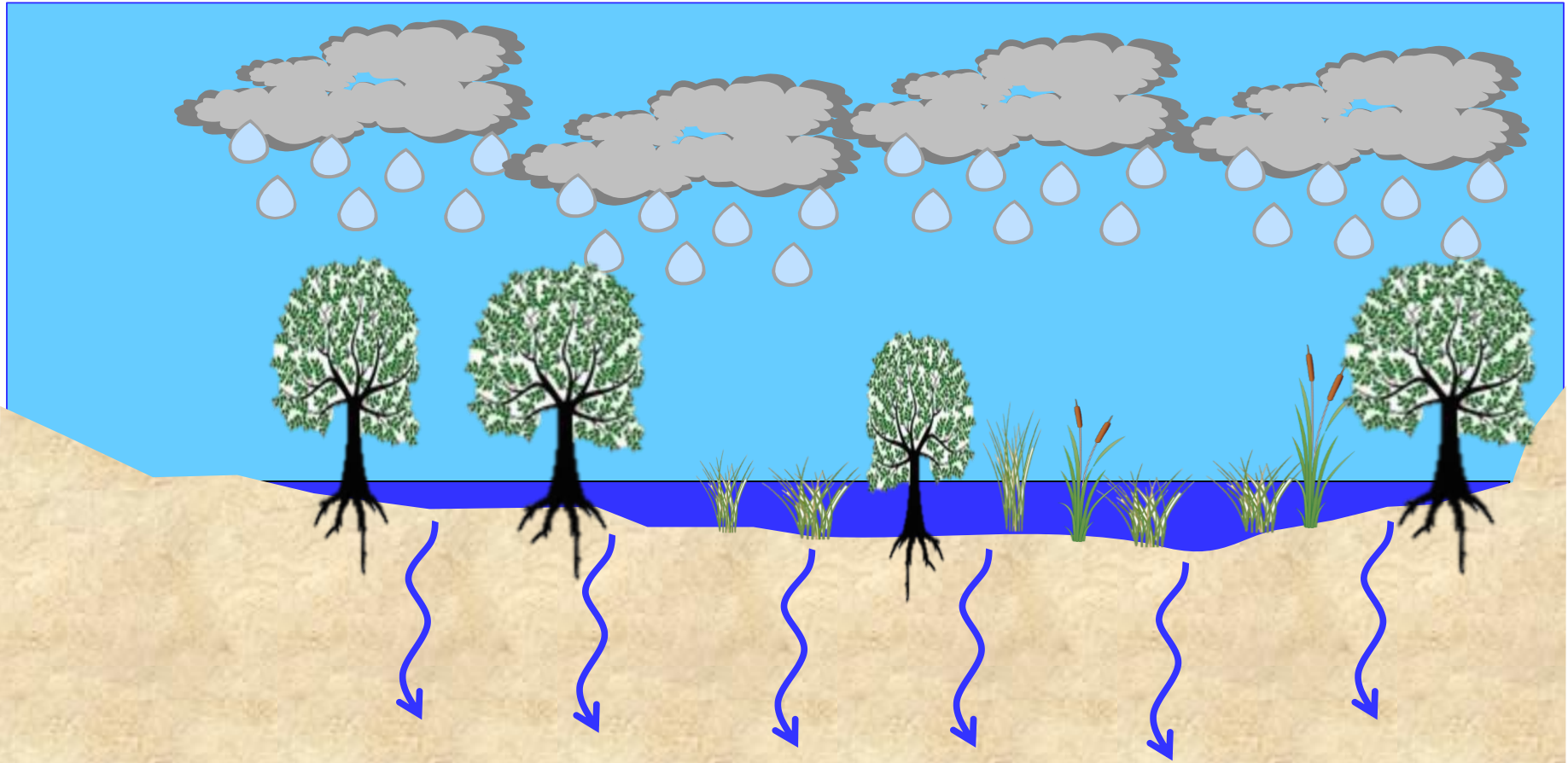
Water Supply

Rivers need
space due
to their
dynamic
nature



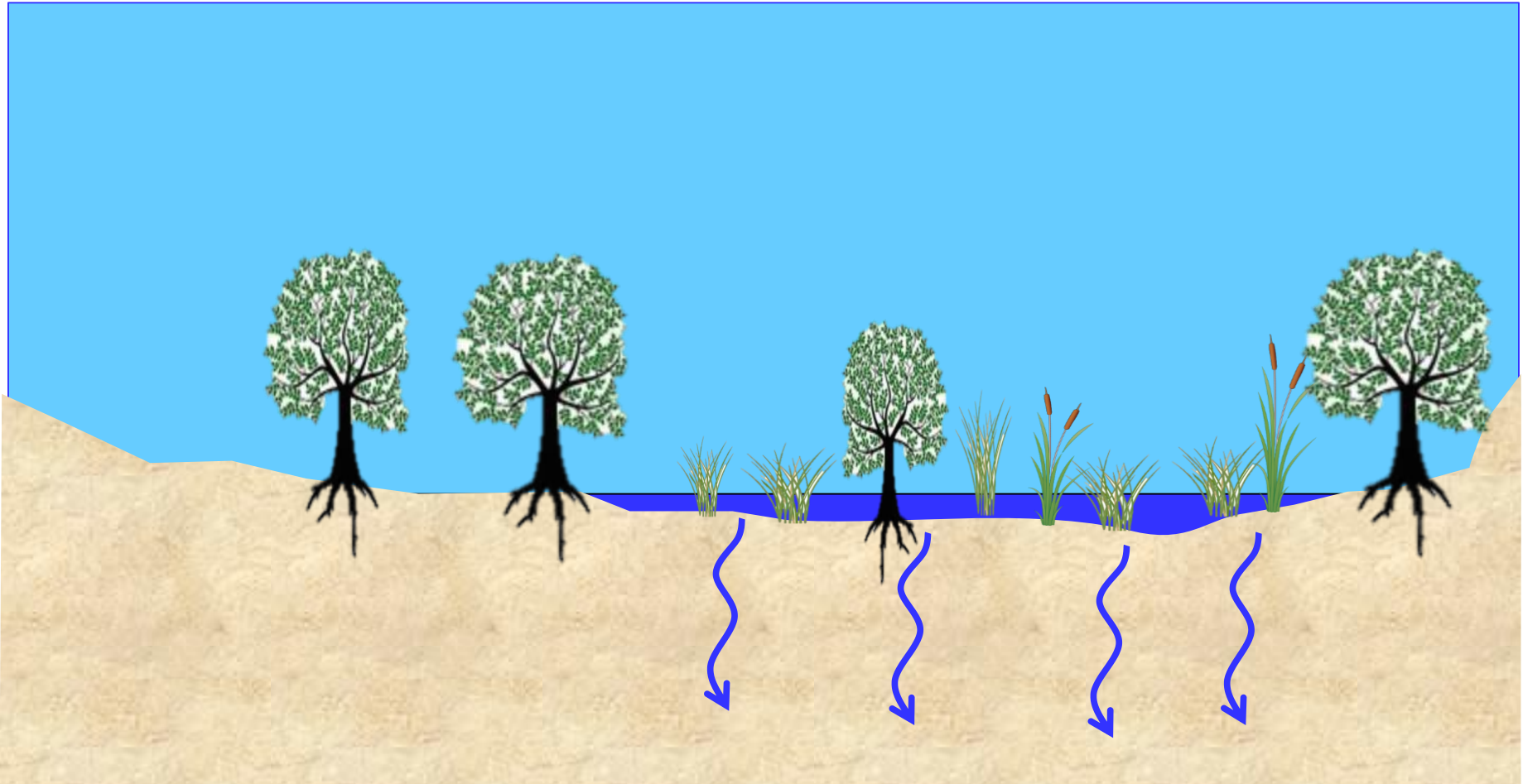
Water Supply

Natural rivers and flood plains retain water



Water Supply

But as we modify
rivers...



Water Supply

Channelized rivers and developed floodplains reduced infiltration time



Water Supply

Concrete rivers and
development prevent
infiltration



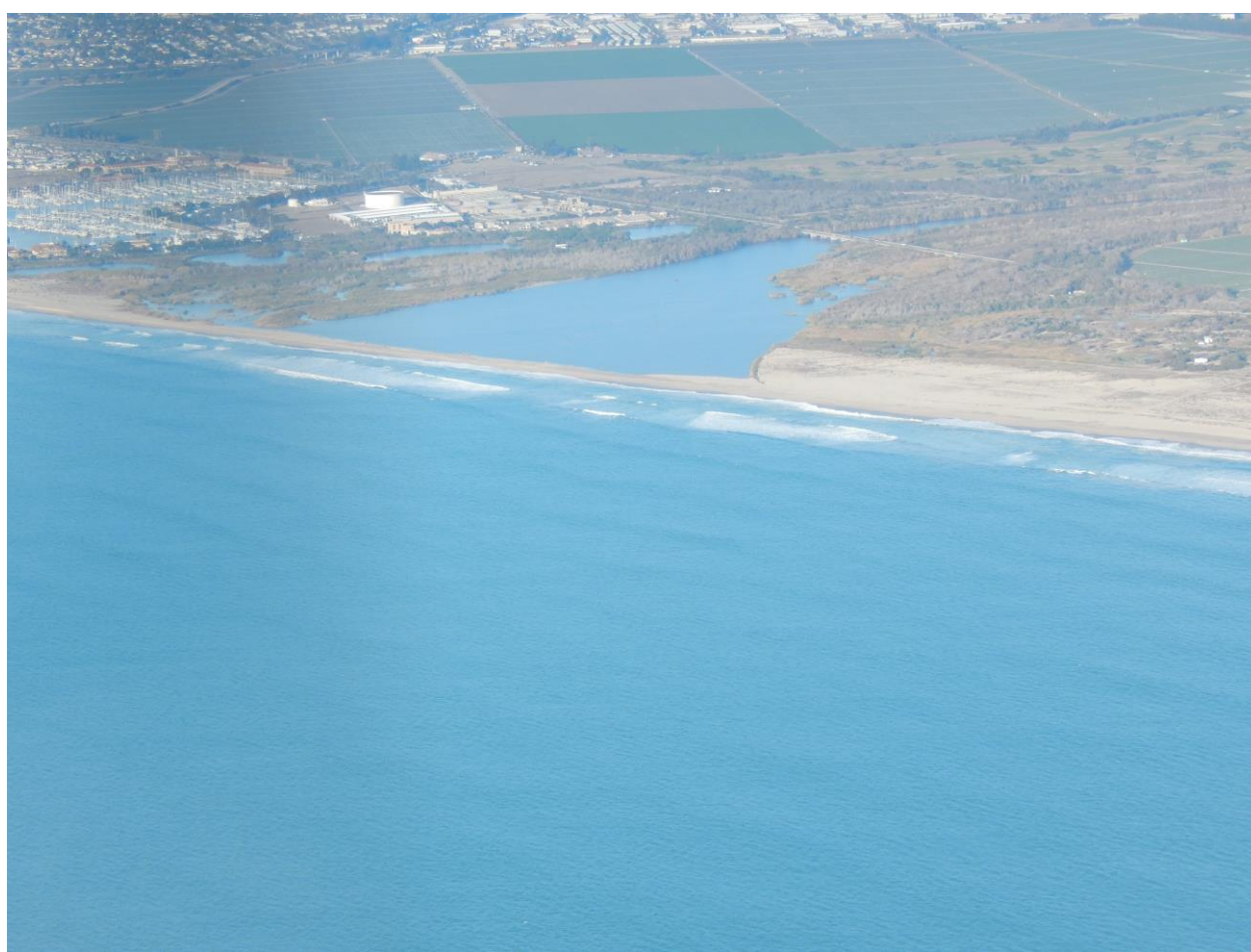
Water Supply



**River wetlands
filter our water
supply**



Habitat: The Estuary



Fresh water meets the salty sea – an areas of high biological diversity

The river is the primary source of sand for the beaches down-coast to Ormond Beach.

Education

Opportunities to learn about the real world.



Recreation



Most cities around the world use flood plains for recreation

Recreation

**A link,
from the
mountains, to
the sea**



**Parkway is a link for wildlife
and people.**

Recreation



**For teens,
local
economy, for
you and me**

Recreation

A focal point for communities

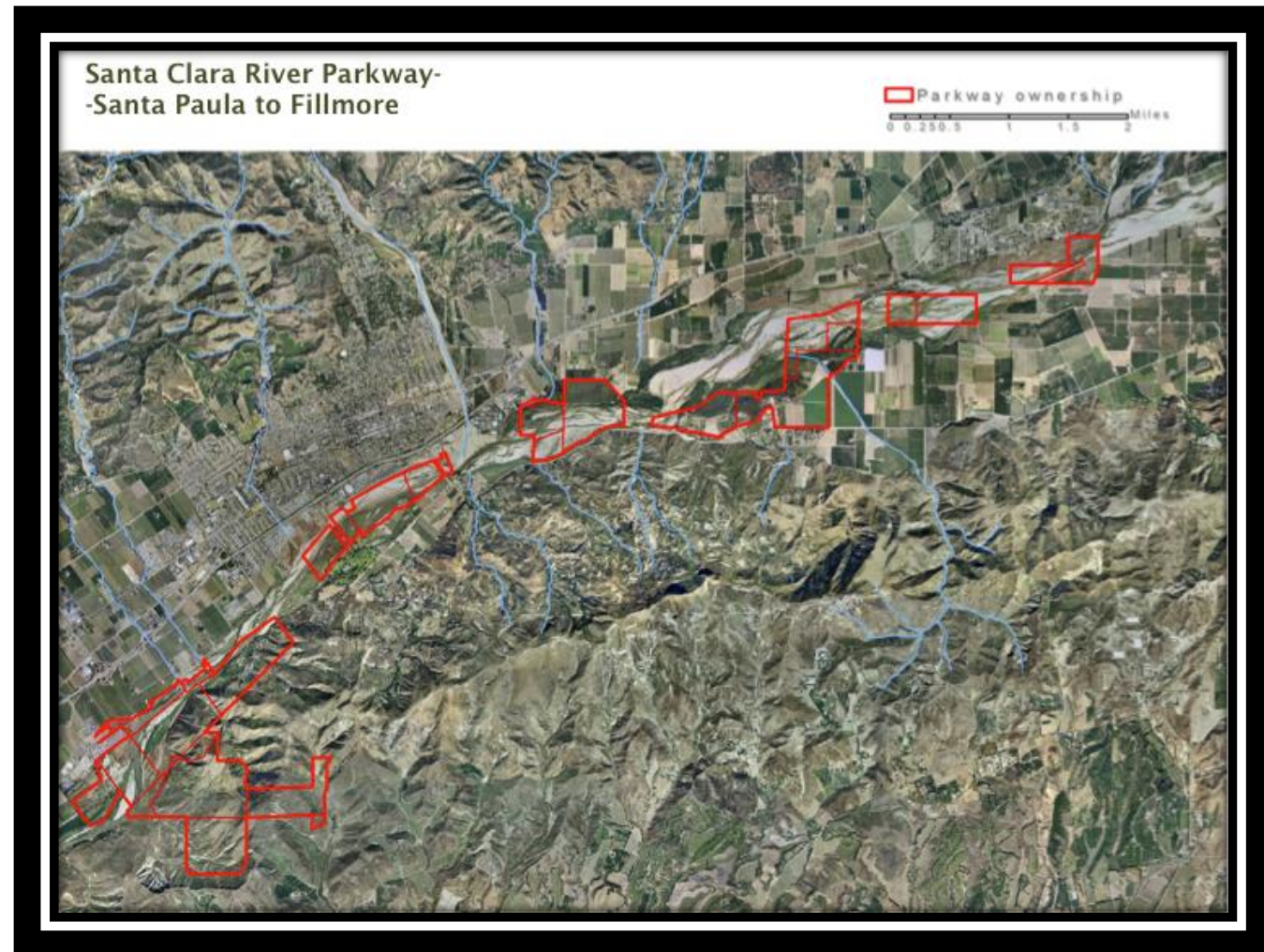


What is the Vision?



Parkway Past

Earlier efforts: California State Coastal Conservancy (SCC)



Parkway Past

Earlier Efforts: SCC

Dynamics
of the
River

Santa Clara River Parkway - Estuary



June, 1929



December, 1998

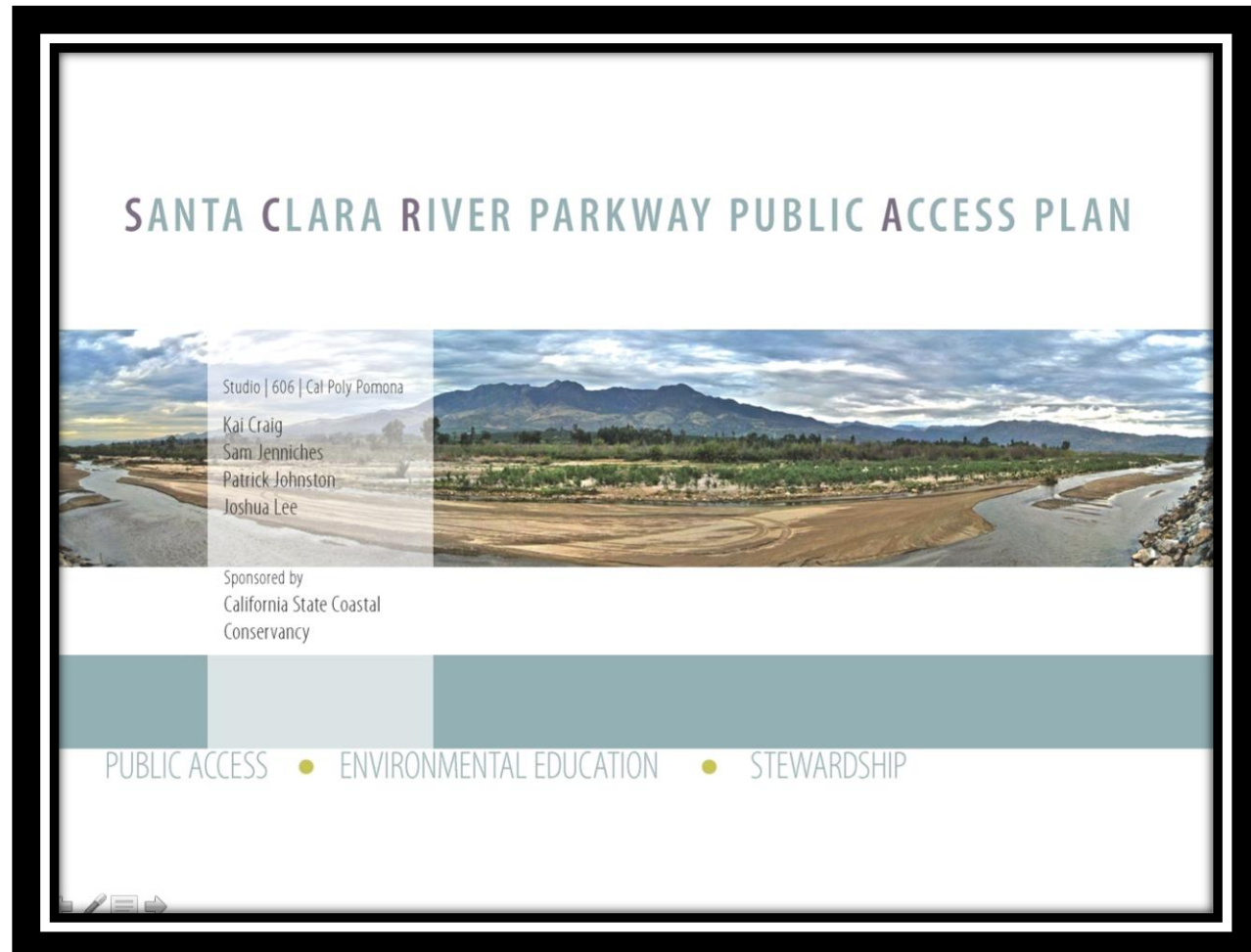
Parkway Past

Earlier Efforts: Cal Poly Pomona, sponsored by SCC

Comprehensive vision plan...

balancing education and stewardship...

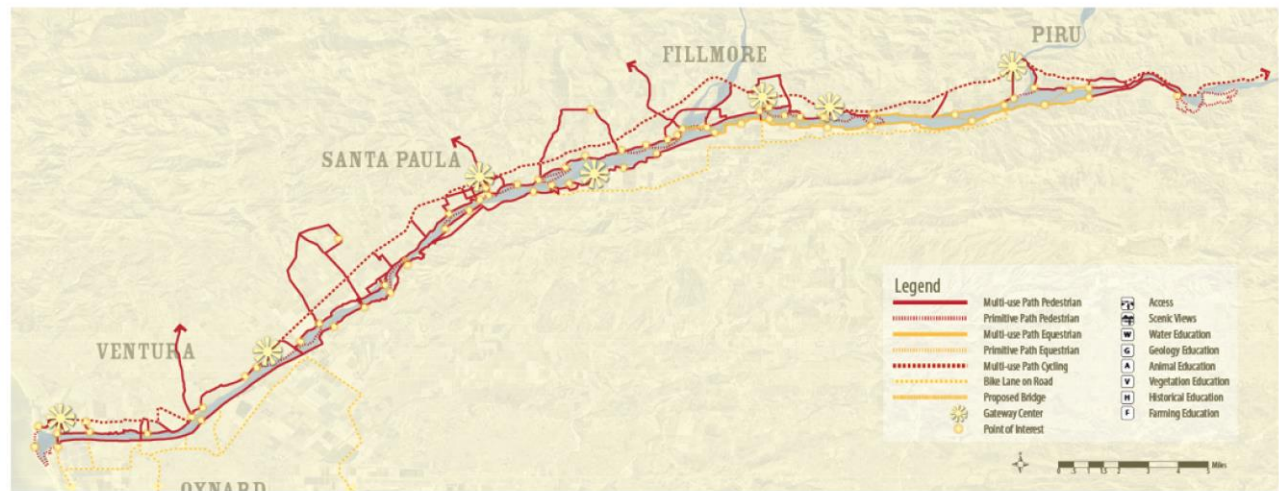
with ecosystem functions and current land use



Parkway Past

Earlier Efforts: Cal Poly Pomona, sponsored by SCC

The Trail Plan



SCR Parkway Trail Plan

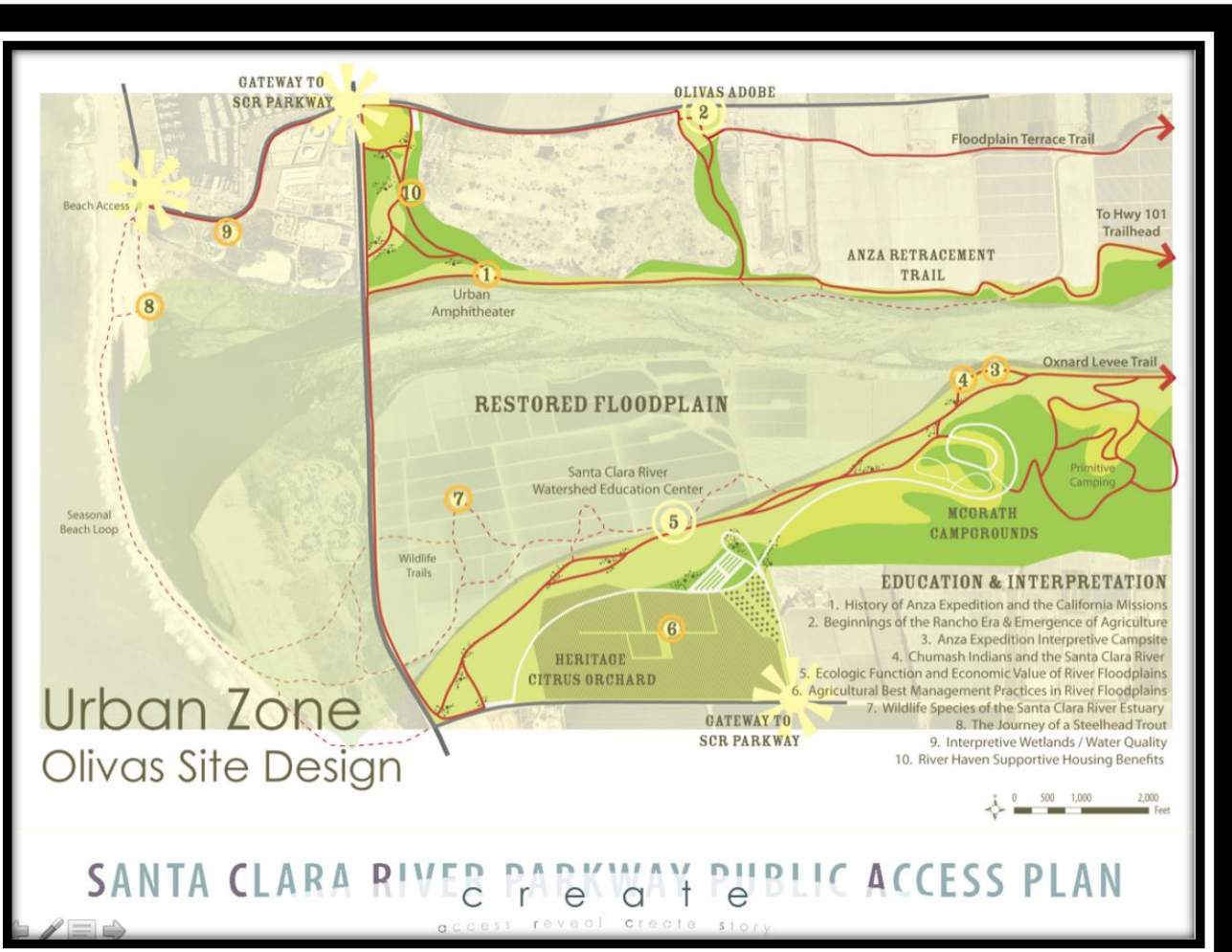
SANTA CLARA RIVER PARKWAY PUBLIC ACCESS PLAN

access reveal create story

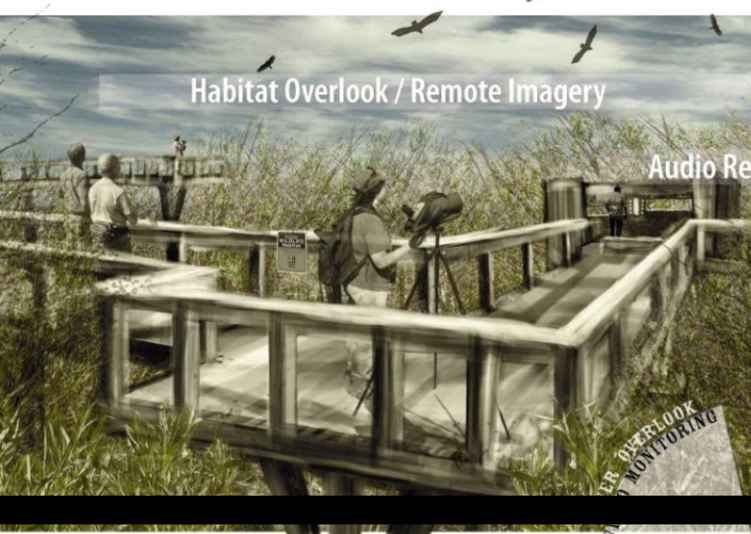
Parkway Past

Earlier Efforts: Cal Poly Pomona, SCC

Trail Plan
detail



Parkway Past



RIVER RESEARCH CENTER



Parkway Past

Plan implementation is underway!

Past...

Key to the Future


Future with Climate Change

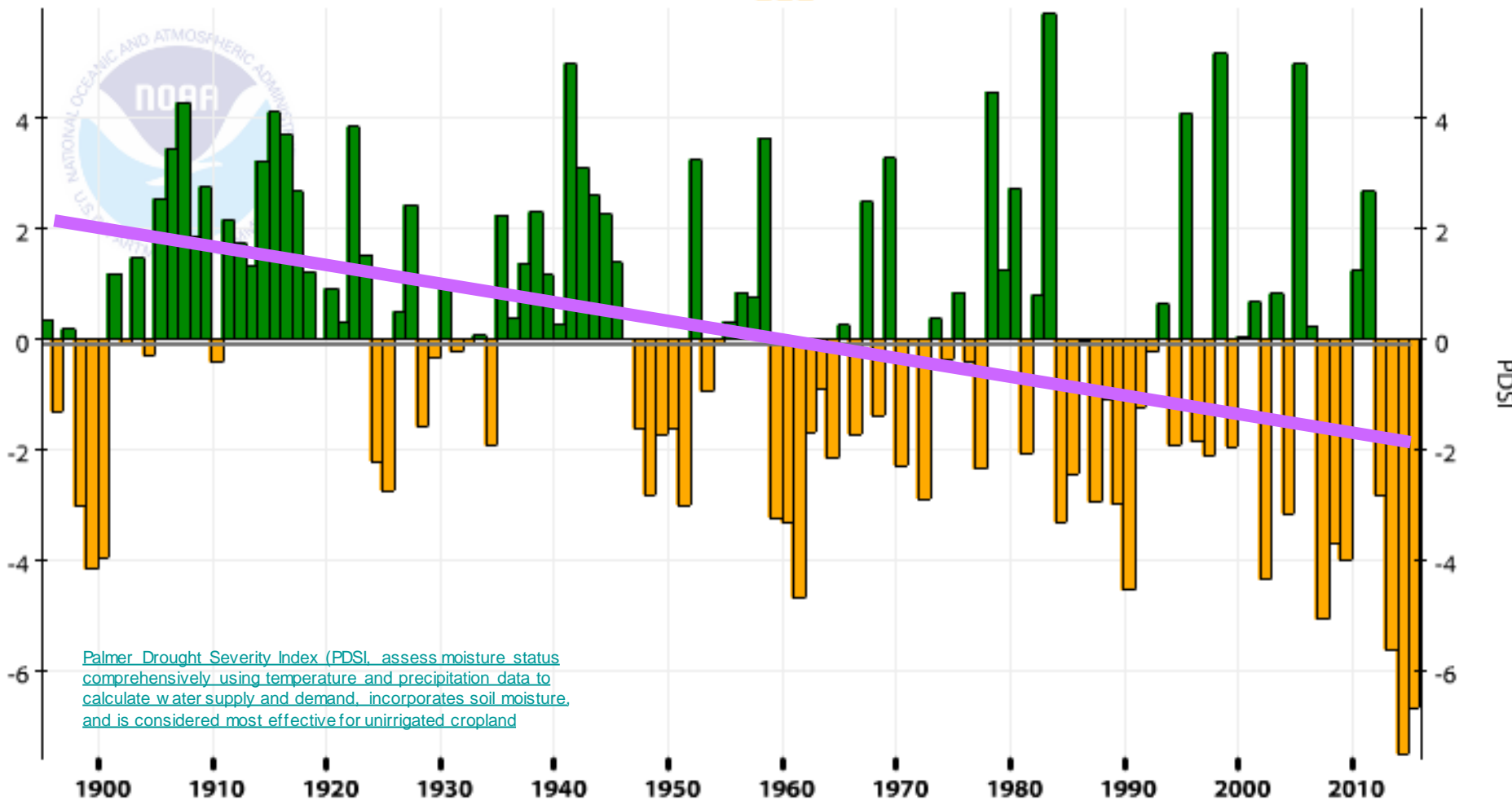


The Changing Climate

Trend: More record rainfall and more droughts

California, Climate Division 6, PDSI, January-August

— 1895-2015 Avg: -0.09  PDSI



[Palmer Drought Severity Index \(PDSI, assess moisture status comprehensively using temperature and precipitation data to calculate water supply and demand, incorporates soil moisture, and is considered most effective for unirrigated cropland\)](#)

How to Make the Future

Demand action from political leaders

Correspond with public agencies

Join a river walk, hike or clean-up

Get involved, see tables at today's event



Questions



Friends of the Santa Clara River



Friends of the Santa Clara River

<http://www.fscr.org> (805)498-4323
or E-mail: bottorffm@verizon.net

Contact Information

Jim Danza, MS, AICP

Assistant Professor

Oxnard College Geography Program

jdanza@vcccd.edu

805-678-5209



Outline

1. What is a Parkway
2. Why a parkway
 1. Flood prevention
 2. Clean Water
 3. Fish
 4. Wildlife
3. Vision for river
4. Past Plans slowly implemented
 1. Just need the Will!
 1. Europe
5. CCC
 1. Role being reset
 2. Grants
 3. Fish Ladder
6. Who's in charge?
 1. You! Take a lead
7. Ways to enjoy the river
 1. Beach
 2. River, hikes, TNC
 3. Tributaries